



件 : SU-01-19-A-07-A08G

: 01

: 2018.9.17

1



:

- Large active area convenient for optical coupling
- Low Dark Current
- Respond to C-Band and 1310nm; L-Band
- High reliability

:

- Near infrared sensors
- Laser diode and LED power monitor
- Near infrared spectroscopy
- Optical measurements and sensing

:

Absolute Maximum Ratings:

Parameter	Symbol	Min.	Max.	Unit
Reverse Voltage	V_R	—	20	V
Forward Current	I_F	—	50	mA
Max. Optical Input Power	P_{MAX}	—	30	mW
Operating Temperature	Top	-40	+85	°C
Storage Temperature	Tstg	-40	+85	°C
Lead Solder Temperature	—	—	260	°C
Lead Solder Time	—	—	10	s

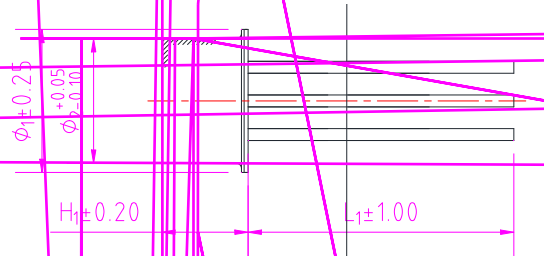


件 : SU-01-19-A-07-A08G

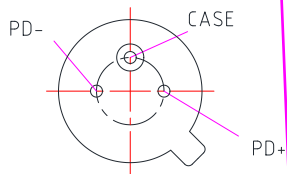
: 01

: 2018.9.17

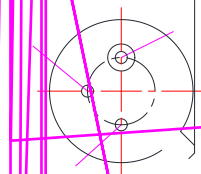
2



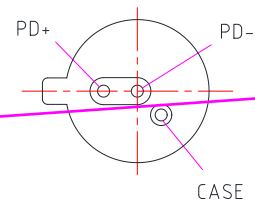
Type A



Type B



Type C





件 : SU-01-19-A-07-A08G

: 01

: 2018.9.17

3



Statement:

SAN-U owns the authority for final explanation of all information contained in this document, which is subject to change without notice. All the information was obtained in particular environments; and SAN-U will not be responsible for the performance of the customers' actual operating environments. All information contained is only for the users' reference and shall not be considered as warranted characteristics. SAN-U will not be liable for damages arising directly or indirectly which from any use of the information contained in this document.

Contact Information:

Address: N501-505 Weiye Bldg., Xiamen Pioneering Park For Overseas Chinese Scholars, Xiamen, Fujian, China

Tel: +86-592-3898601, 3898608, 5318000

Fax: +86-592-5703588

Email: sales@san-u.com

<http://www.san-u.com>